

CAMERASHOE

ONLY BALLHEAD (without SHOE part)



※BALLHEAD-N2 bottom: 1/4(F)



BALLHEAD-N2, BALLHEAD-N3, BALLHEAD-N4

BALLHEAD-N2

MAX 2 kg



H55×W35×D30mm 50g

BALLHEAD-N3

MAX 4 kg



H71×W55×D35mm 143g

BALLHEAD-N4

MAX 6 kg



H84×W61×D42mm 255g

BALLHEAD-5

MAX 7 kg



H99×W100×D58mm 340g

CAMERASHOE SLIDE TYPE



C-12K, C-16A, C-162A

C-12K

MAX 2 kg



H57×W35×D30mm 59g

C-16A

MAX 4 kg



H80×W55×D35mm 152g

C-162A

MAX 6 kg



H86×W61×D42mm 264g

C-163

MAX 7 kg



H101×W100×D58mm 349g

CAMERASHOE SCREW TYPE



C-13K, C-17A, C-172A

C-13K

MAX 2 kg



H57×W35×D30mm 57g

C-17A

MAX 4 kg



H80×W55×D35mm 150g

C-172A

MAX 6 kg



H86×W61×D42mm 262g

C-173

MAX 7 kg



H101×W100×D58mm 347g

CAMERASHOE SLIDE/SCREW BOTH TYPE

C-SN3

SLIDE-SCREW BOTH SHOE
you can mount your ball head.



H22+top screw 5×W36×D24mm Weight 36g

BALLHEAD-SN3

BALLHEAD-N3+C-SN3 SET



H93×W66×D44mm 180g

BALLHEAD-SN2

BALLHEAD-N2+C-SN3 SET

BALLHEAD-SN4
BALLHEAD-N4+C-SN3 SET

BALLHEAD-SN5
BALLHEAD-5+C-SN3 SET

CHEESE SHOE

CHEESE-P-SHOE 1

Various hole shoe
(EFFECTIVE: CHEESE SHOE with ARM)



Increase SLIDE SHOE PLATE

C-HWCRIP1

SLIDE SHOE PLATE
add 1 pcs



C-HWTRIPLE1

SLIDE SHOE PLATE
add 3 pcs



STRAIGHT BAR

XP-MSA

length 16cm ARM, weight 97g
SLIDE SHOE PLATE add 2 pcs



BALLHEADSHOE for light stand

BALLHEAD-N3-φ17凸

you can mount lighting on 17mm stand.
MAX 4 kg



115×66×34mm 213g

CONVERSION SHOE · ARM

1/4(M)→SLIDE PLATE change SHOE

C-VC
all metal



C-VCF
body : resin
(screw·slide plate : metal)



C-VCS
for only SONY camera
(fix 4point screw)



1/4(F)→SLIDE PLATE

C-VCF F
body : resin
(screw·slide plate : metal)



SLIDE SHOE→1/4(F)

C-CV
for light etc.
(SLIDE type change to screw tape)



SLIDE SHOE→1/4(M)

C-SS 1
for BALLHEAD→be SLIDESHOE
(use attach your ballhead)



change 1/4 → 3/8 , change 3/8→1/4

C-1/4(M)-3/8(M)
1/4(M)⇔3/8(M)



TOMENEJI-1/4to3/8
1/4(F)⇔3/8(M)



CAPNEJI-1/4to3/8
1/4(F)⇔3/8(M)



CAPNEJI-3/8to1/4
3/8(F)⇔1/4(M)



SHOE for SmartPhone

C-SPHON E 2

you can fix smartphone and TX/RX etc
open width : 55~83mm



C-12K-SPHON E 2

C-SPNONE2 + Camerashoe C-12K SET



SHOE for IKEGAMI EFP HANDY CAMERA

C-QM 1

MAX 4~5 kg
you can quick mount on IKEGAMI



H100×W85×D50mm 325g

C-172-M 4

MAX 4~5 kg
after remove grip screw, can mount



H90×W89×D44mm 220g

SHOE for SONY EFP HANDY CAMERA

C-QM 2

MAX 4~5 kg
you can quick mount
on SONY Camera

H100×W85×D58mm 233g



FREE ARM for MONITOR · CAMERA · LIGHTING etc.

N-ARM 1 A

length : 1 5 cm
(attach SLIDE part : 19cm)

top 1/4(M)·bottom 1/4(M)
(set include : SLIDE SHOE)

MAX 2.5kg
arm Weight 160g

N-ARM 1 A-F with Camera table

with Camera table type
length : 1 5 cm
(attach SLIDE part : 19cm)

top 1/4(M)·bottom 1/4(M)
(set include : SLIDE SHOE)

MAX 2.5kg
arm Weight 233g

N-ARM 1 A-NCLAMP with Clamp

with Clamp type
length : 1 5 cm

top 1/4(M)·bottom 1/4(M)

MAX 2.5kg
arm Weight 270g
open width : 13~35mm

N-ARM 2 A

length : 2 6 cm
(attach SLIDE part : 30cm)

top 1/4(M)·bottom 1/4(M)
(set include : SLIDE SHOE)

MAX 2 kg
arm Weight 210g

N-ARM 2 A-F with Camera table

with Camera table type
length : 2 6 cm
(attach SLIDE part : 30cm)

top 1/4(M)·bottom 1/4(M)
(set include : SLIDE SHOE)

MAX 2 kg
arm Weight 283g

N-ARM 2 A-NCLAMP with Clamp

with Clamp type
length : 2 6 cm

top 1/4(M)·bottom 1/4(M)

MAX 2 kg
arm Weight 340g
open width : 13~35mm

FLEXIBLE ARM

top: 1/4(M) · bottom : 1/4(F)

F-ARM20-1/4
length:20cm
Weight 177g

F-ARM30-1/4
length:30cm
Weight 246g

F-ARM40-1/4
length:40cm
Weight 316g

top: 3/8(M) · bottom : 3/8(F)

F-ARM20-3/8
length:20cm
Weight 160g

F-ARM30-3/8
length:30cm
Weight 230g

F-ARM40-3/8
length:30cm
Weight 300g



SHOE ARM

C-USA 1

about 5 cm ARM
(top 1/4(M) , bottom SLIDE SHOE)



Size : H100×W40×D25mm 100g

1
PROFILE
SUITABLE
SHEET

2
BATTERY
PLATE

3
FOR BRAND
PRODUCTS

4
CABLE
CONNECTOR

5
RAINCOVER
and more

6
SOFT BAG

7
SHOE
CLIP·POLE
and more

8
OTHER

CLAMP · EXTEND POLE · VACUUM SUCKER

CLAMP for mount handle · table · pole

VICE for mount handle · table · pole

NCLAMP-1

small clamp
1/4(F)·3/8(F)hole



open Width : 13~35mm
MAX 4 kg Weight 110g

BALLHEAD-N3-NCLAMP

BALLHEAD-N3+NCLAMP1



open width: 25mm
MAX 4 kg
H120×W82×D34mm 213g

CLAMPSHOE-R1



open width: 45mm
MAX 1~2 kg
H138×W87×D30mm 275g

MCG-3



MAX2~3kg

pinch width: 30mm
H150×W85×D50mm
Weight 345g

MCG-3-VICENOMI

only VICE part
top: 16mm hole
(suitable 15.8φ adapter)



HANDLESHOE-R1

for bicycle handle

pinch width: 20~38mm
H100×W60×D40mm
Weight 110g



MULTI GRIP this grip is also mini stand.

MG-2

this grip is also mini stand.



H75×W160×D35mm Weight 90g

EXTEND POLE for Lighting and Camera etc.

KP-1/4N-2 4section



MINIMUM 375 ~ MAX 1,023 mm

SP-1/4N-2 3section



MINIMUM 310 mm ~ MAX 635 mm

SSPOLE-D1 4section



MINIMUM 200 mm ~ MAX 500 mm
for small LED light

DP-Φ17 4section



for lighting
MINIMUM 425 mm
MAX 1,080 mm

VACUUM SUCKER

Q-3A

MAX 4 kg sucker diameter : 75mm



SUCKER CAP: Green



H115×W75×D75mm Weight 270g

Q-2



MAX LOAD 1~2kg

sucker diameter : 75mm

SUCKER CAP: Green

H90mm Weight 205g

Q-4A



MAXLOAD 6kg

sucker diameter : 118mm

SUCKER CAP: Red

H135mm Weight 470g



WIRE-Q5

If the SUCKER is out, this wire help!
you can use up to Q-5

length : 50 cm

Q-5



MAX LOAD 7kg

sucker diameter : 150mm

SUCKER CAP: Yellow

H160mm Weight 750g

Q-3-SUCKERNOMI

only SUCKER part
top : 1/4(M) screw
sucker diameter : 75mm
SUCKER CAP: Green



Q-4-SUCKERNOMI

only SUCKER part
top : 1/4(M) screw
sucker diameter : 118mm
SUCKER CAP: Red



Q-5-SUCKERNOMI

only SUCKER part
top : 1/4(M) screw
sucker diameter : 150mm
SUCKER CAP: Yellow



Q-R2GRIP

(this product is not VACUUM type)

MAX LOAD 1~2kg
sucker diameter : 85mm



H158mm Weight 280g

CLIP

G-3 A

MAX 4 kg pinch width: 50 mm



H115×W115×D63 Weight 360g

G-2

MAX1~2kg



pinch width:50mm
H105×W115×D63mm
Weight 307g

G-2 GRIP

MAX1~2kg



pinch width:50mm
H225×W155×D65mm
Weight 528g

G-4 A

MAX 6 kg



pinch width:50mm
H135×W115×D63mm
Weight 476g

G-3-CLIPNOMI

only CLIP part
top : 1/4(M) screw



OTHER

1
PROFILE
SUITABLE
SHEET

2
BATTERY
PLATE

3
FOR BRAND
PRODUCTS

4
CABLE
CONNECTOR

5
RAINCOVER
and more

6
SOFT BAG

7
SHOE
CLIP•POLE
and more

8
OTHER

LENS CLEANING

FCLOTH-1

Silicon Cloth
for LENS and EQUIPMENT



AG+WETLENSCP-1015

WET type cleaning paper with AG+



AG + ...AG+ is silver ion.
AG+ effect
•Antibacterial
•Antifungal
•Sterilization

maintenance of LENS and Camera.
monitor / smart phone / glasses etc.

• (1 piece)
AG+WETLENSCP-1015
• **SET** (50piece)
AG+WETLENSCP-1015-50SET



LENSCP-1017-30

dry type cleaning paper



paper size:100×170mm

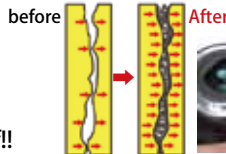
• (30piece)
LENSCP-1017-30

• **SET** (30piece×10)
LENSCP-1017-30-10SET

ELECTRICAL CONTACT CLEANER

NANO CARBON PEN

Nano-sized particles fill the irregularities of the metal.
It does not attack the metal.
you can maintenance by yourself!!



CONTACT POINT

• lens mount
• battery terminal
• media(SD/CF etc.)
• earphone
• HANDY PHONE etc.



FLASH METER with Color LCD

POLARIS K a r a t

FD function is <World's first>

Contrast Function

ΔEV

Useful for checking lighting evenness of backgrounds, and lighting ratio.

Flash Duration Mode

FD

Measuring the duration time of the strobe flash. (T0.5: 1/100~1/9000)

Flash Ratio Function

FR

On Flash measuring, ratio of strobe light of overall light quantity is displayed. (in 1% increment)

Auto ISO Mode

ISO

Setting desired Aperture (F) and Shutter Speed (T) find appropriate ISO number.

